

Special anti-freeze with five simultaneous functions

1 Anti-freeze



2 Anti-boil



3 Anti-scale



4 Anti-corrosion



5 Anti-foam



Introduction of Abrizan Industrial Research Company

Abrizan Industrial Research Company, manufacturer of all kinds of chemicals, including new generation of anti-scale, anti-corrosion, scale remover, industrial anti-bio fouling (biocides), coagulants, anti-scalants and all chemicals required for industrial systems, Wall Mounted Boiler, engine rooms of office and industrial buildings and specialized solutions for Passenger cars and industrial machinery.

Other products of Abrizan Company for all types of vehicles include the CS Mitreh antifreeze complete solution. In addition to being antifreeze, this solution is also anti-boiling, anti-scale, anti-corrosion and anti-foaming. This solution will meet all the needs of the car radiator and by using it, you will increase the useful life of the car radiator and its better performance.

COMPLETE SOLUTION

CS MITREH

Anti-Freeze & Anti-Boil
Anti-Scale & Anti-Corrosion

CS0011

For gasoline and diesel cars

CS0026

For household thermal packages

CS0032

For industrial thermal systems



Factory: Malusjan Industrial Zone, Shiraz
Head Office: Fars Science And Technology Park
+98 7136245332 +98 7136364037
Tehran Office: Amirloo St., Tohid Square
+98 2166127793 +98 2166127884
Ahvaz office: IT tower, Pasdaran Boulevard
+98 6134493227 +98 6134493226
Analytical laboratory: Fars Science And Technology Park
+98 7136236837
Official sales representative: Ahoura Engineering Group
+98 9172500507

abrizan.mitreh@gmail.com

www.mitreh.com

Usage

Row	Type of use	Temperature range	Dosage
1	Home installations	0 to -15	One liter for every 3-2 liters of water
2		-15 to -23	One liter for every 2-1 liters of water
3		-23 to -34	One liter per liter of water
4		-34 to -48	One liter for every 1-0.5 liter of water
5	Cryogenic industry installations	0 to -15	One liter for every 3-2 liters of water
6		-15 to -23	One liter for every 2-1 liters of water
7		-23 to -34	One liter per liter of water
8		-34 to -48	One liter for every 1-0.5 liter of water
9	Vehicles	0 to -15	One liter for every 3-2 liters of water
10		15- to -23	One liter for every 2-1 liters of water
11		-15 to -23	One liter per liter of water
12		-34 to -48	One liter for every 1-0.5 liter of water

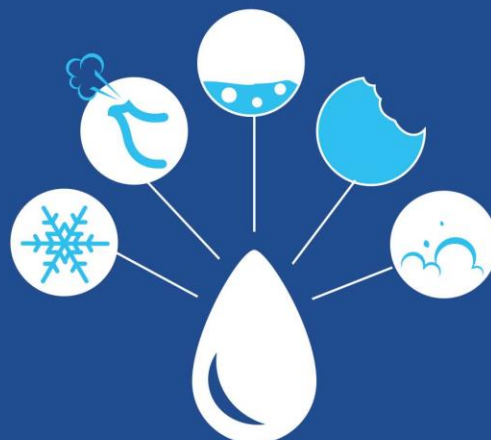
According to the calibration table, inject the required amount of solution into the system according to the type of consumption.

This solution provides thermal equilibrium throughout the system after being combined with water at the same time as produced heat repelling. Simply, it prevents freezing or boiling water in the cold and hot seasons of the year. On the other hand, there are compounds in this solution that prevent the rusting of installations and the formation of scales caused by solutes in water.

www.mitreh.com

Uses of CS Mitreh antifreeze complete solutions

- Types of gasoline and diesel vehicles
- Home cooling and heating facilities
- Industrial heating and cooling facilities and equipment



Introduction of CS Mitreh specialized antifreeze solutions

Water is known as the most important cooling fluid in domestic cooling systems (such as radiators), industries (cooling and heating systems), vehicles (cooling systems and radiators), buildings (power-house), and all water engineering process industries. This fluid, with its high thermal capacity, has an excellent performance in terms of heat transfer and is also the most economical and available fluid for this purpose. Pure water has a relatively low boiling point, which means it boils at low temperatures and also has a high freezing point - it freezes early in the cold. Most importantly, the presence of solutes, ions, dissolved oxygen, etc., causes decay and rust in installation and ducts. Therefore, the use of water alone in these systems will cause problems. The best strategy, in this case, is to reduce and even eliminate the disadvantages of water and use improved water with improved properties.

CS Mitreh solution, in addition to raising the boiling temperature and greatly reducing the freezing temperature, prevents the formation of foam, prevents the formation of scale and clogging of ducts and facilities, and also prevents them from corroding, especially when the system is turned off. As a result, after restarting the system, there are no previous problems such as clogging and bursting of pipes, and the useful life of the system and facilities is increased.

CS MITREH
COMPLETE SOLUTION